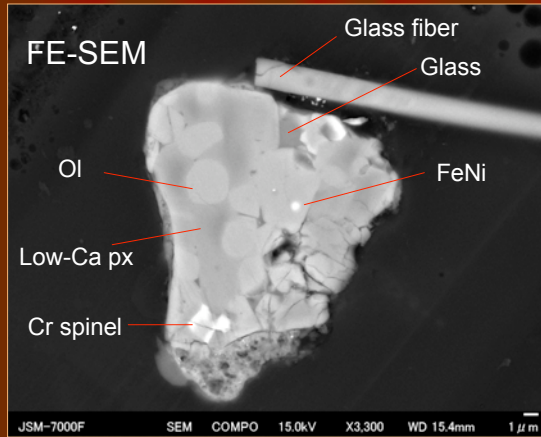


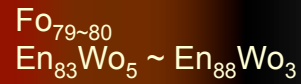
# 彗星コンドリュールの鉱物学的特徴と酸素同位体比

中村智樹(九州大学)

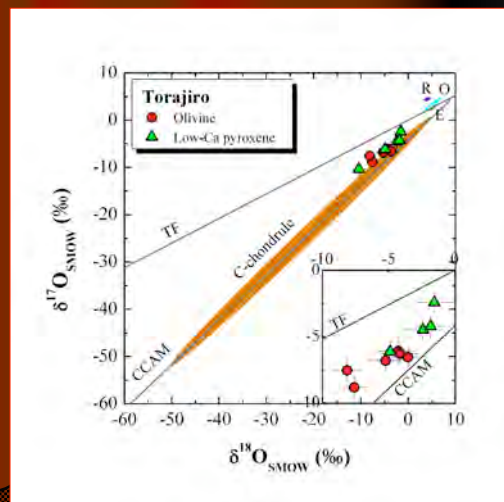


**Torajiro**  
C2054,0,35,6,0

The particle experienced partial melting at temperature higher than 1500 °C, before capture to the aerogel, i. e., prior to the formation of the comet.

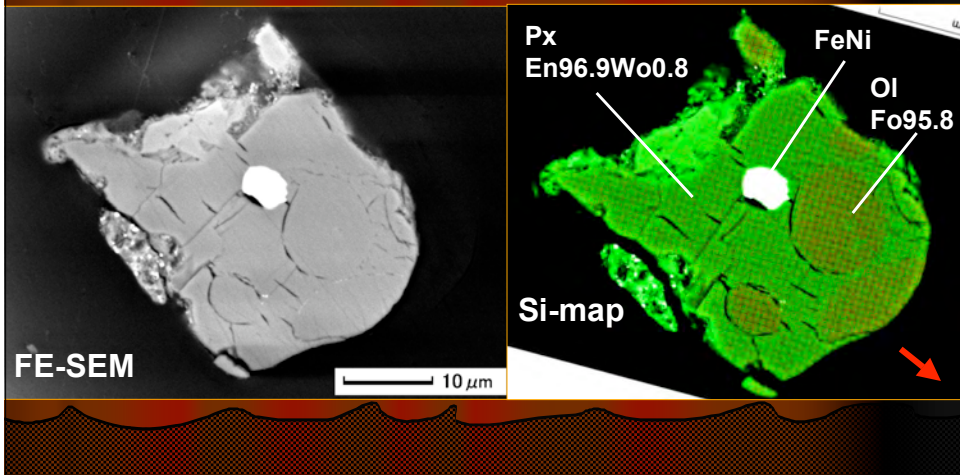


## Torajiro: oxygen isotope ratios



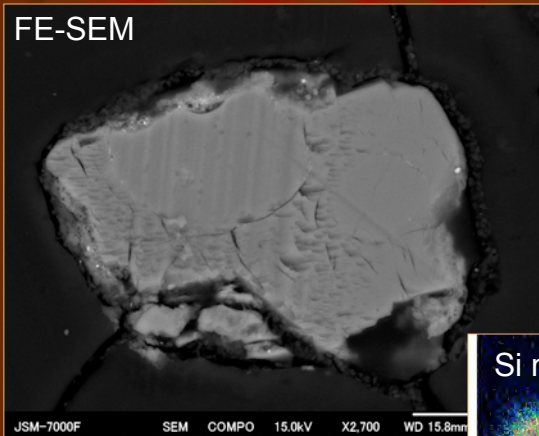
# Kirin-do: C2081,1,108,2,0

Poikilitic portion



FE-SEM

# Gozen-sama C2081,1,108,1,0



Si map

OI-A Fo<sub>95</sub>

OI-B Fo<sub>95</sub>

LPx En<sub>95</sub>Wo<sub>1</sub>

